

**Customer Services Freephone:**

0800 521 050

**Customer Services Freefax:**

0800 521 205

**Customer Services Email:**

[cservice@knauf.co.uk](mailto:cservice@knauf.co.uk)

**Literature Hotline:**

0800 731 2108

**Technical Service Hotline:**

01795 416 259

**Website:**

[www.knaufdrywall.co.uk](http://www.knaufdrywall.co.uk)

Knauf Drywall

PO Box 133

Sittingbourne

Kent ME10 3HW

Tel: 01795 424499

Fax: 01795 428651

**KNAUF** DRYWALL

# Working with the Environment

“At Knauf we manufacture a wide variety of products that serve a common goal, helping to make the most of our planet’s energy resources. A family owned global company, we understand and are committed to high standards in quality, performance and environmental responsibility. Every step we take today towards energy conservation helps ensure better lives for generations to come.”



**KNAUF** DRYWALL

## Working with the Environment

At Knauf Drywall we recognise that we have a responsibility for the environment and to the communities in which our facilities are located. We are committed to strengthening our business by making environmental issues an integral part of our activities, and by conducting business in such a way as to seek to minimise negative impact on the environment. All of our products are extensively tested and monitored for suitability, safety and environmental impact.

We continue to identify and implement energy saving strategies in our manufacturing plants to ensure that our operations pursue an environmentally conscious program, which reflects advances in technology and environmental management.

## Products for Now and the Future

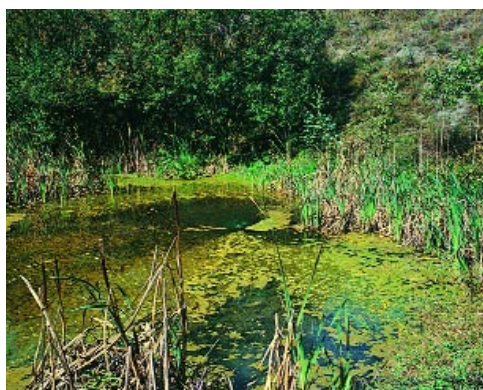
Our commitment to the environment starts with the products we manufacture. Knauf Drywall produces an extensive range of products which help to enhance the fabric of peoples lives. Products to help prevent the loss of heat and save energy, and products to tackle the major issue of unwanted noise which are leading the way in both protecting the environment for future generations and, improving the conditions in which we live and work today.

Setting the standard in manufacturing Knauf Drywall has developed or championed many of the advances in product manufacturing in use today. We at Knauf have made a positive contribution towards the further development of desulphurisation technology. This simple cleaning process for the emissions of coal-fired power stations improves the atmosphere and allows the by-product created to be harvested and used in the manufacture of Plasterboard products.

The use of recycled paper in the manufacture of our board products is now commonplace.

## Knauf Drywall

# Working with the Environment



The Knauf Docking Facility  
at Sittingbourne

## Knauf Drywall Environmental Policy

Knauf Drywall recognises that its operations and activities impact on the local and global environment in a number of ways and as such are committed to continually reducing these environmental impacts. The overall objective will be to develop the business having full regard to the environmental and taking into account the views of all affected interests. To this end Knauf will:

- Meet and where possible exceed all relevant statutory legislation.
- Maintain the appearance of all its premises to the highest practical standards
- Minimise any disturbance to the local and global environment and to the quality of life of the local communities in which the company operates.
- Take positive steps to conserve resources, particularly those which are scarce or non-renewable.
- Provide the information necessary to enable employees to operate the process properly and with minimal effects on man or the environment.
- Assess in advance where possible, the environmental effects of any new development and adjust the company's plans accordingly.
- Provide the information necessary to enable the company's products to be properly used, stored and disposed of so as to avoid unacceptable effects on man or the environment.
- Be committed to continuous improvement and the prevention of pollution.



Knauf Sittingbourne Recycling Plant

## Packaging

At Knauf we regularly reassess the way in which we package our products to take advantage of the latest developments. Eliminating unnecessary packaging and reducing waste is a vital program. As an example of the benefits of this work, the majority of our products are now shipped on bearers made of flax and designed for single delivery use. These bearers use the minimum of material.

## Responsible Distribution

The reduction in traffic movements and the associated pollution is a very important issue. At Knauf we actively measure and monitor all our vehicle movements seeking to ensure wherever possible that vehicles do not leave our premises partially loaded. This can involve complex matching of orders from different customers as we strive to ensure that our vehicles are best utilised. This makes good environmental as well as good business sense.

In addition, a large proportion of the raw materials used in the manufacture of our products are delivered via sea at our own docking facilities. Located close to our production facilities they help to further reduce the number of heavy vehicle movements on our roads.

## Energy Saving

We have made, and will continue to make, a concerted effort to improve energy efficiency at our production facilities by the redesign and modification of our processing equipment.

## Accountable Operations

At both our Sittingbourne and Immingham production facilities we are actively working towards achieving ISO14001, the standard governing the management of Environmental Systems.